

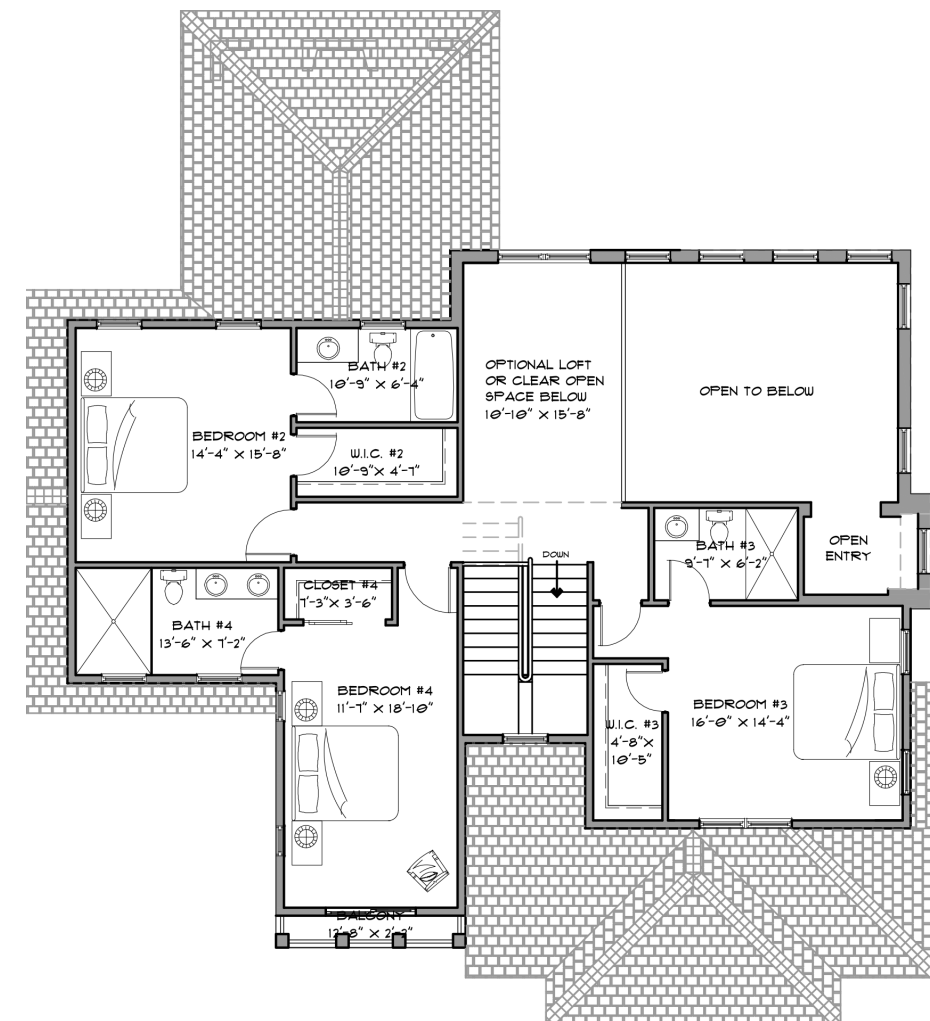
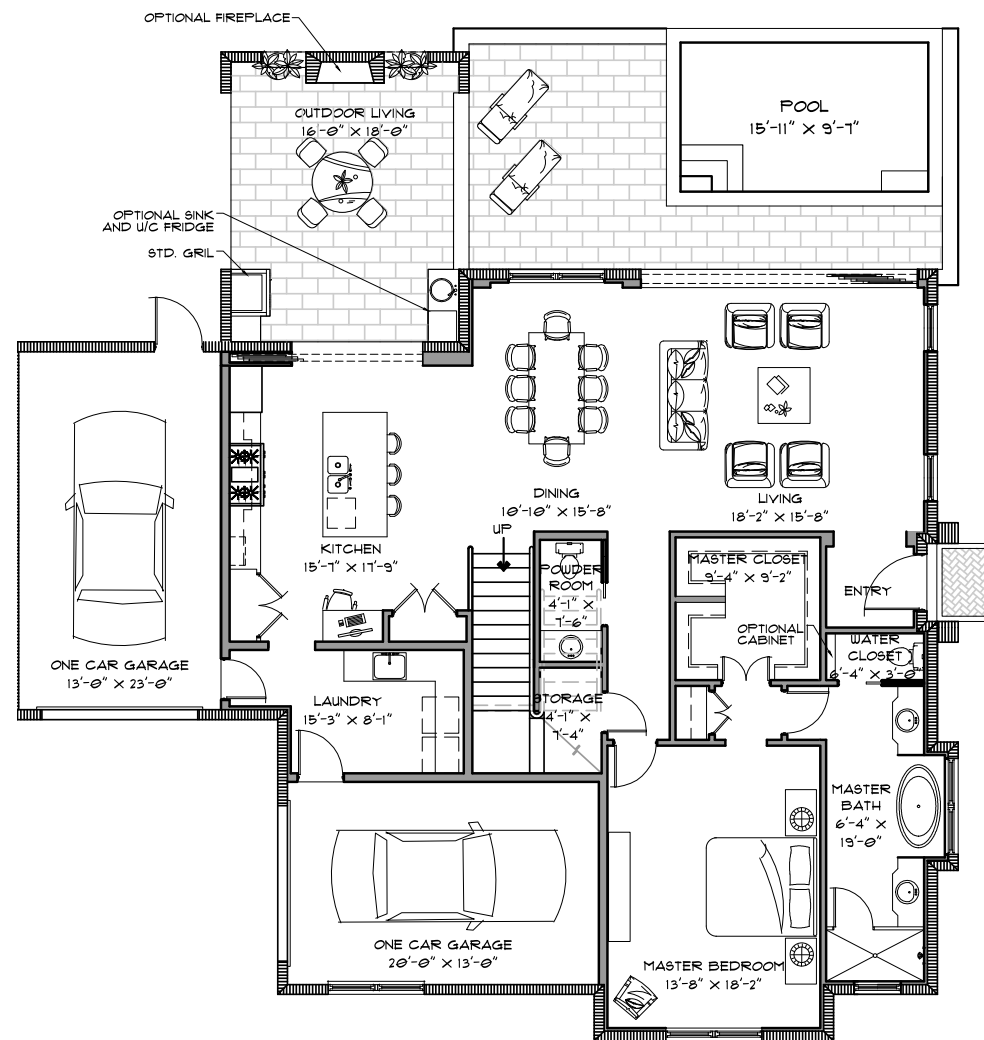


PROVENCE

4 Bedroom
4.5 Bathrooms

Lower Floor 1,783 SQ. FT.
Upper Floor 1335 SQ. FT.

Total Under Air 3,118 SQ. FT.



Marketed exclusively by
Premier Sotheby's
INTERNATIONAL REALTY
Each office is independently owned and operated

Home and community information, including pricing, included features, terms, availability and amenities, are subject to change, prior to sale or withdrawal at any time without notice or obligation. Drawings, photographs, renderings, video, scale models, square footages, floor plans, elevations, features, colors, and sizes are approximate for presentation purposes only and may vary from the homes as built. Home prices refer to the base price of the house and do not include options or premiums, unless otherwise indicated for a specific home. Nothing on our website should be construed as legal, accounting or tax advice.

PROVENCE Options

Loft Addition (see floor plan)

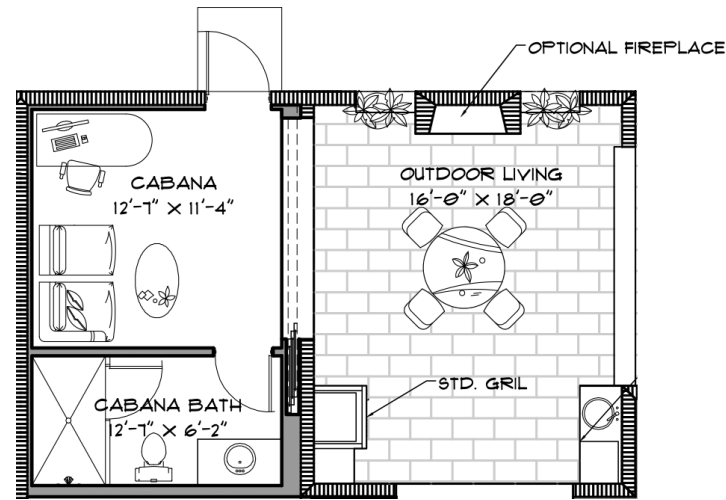
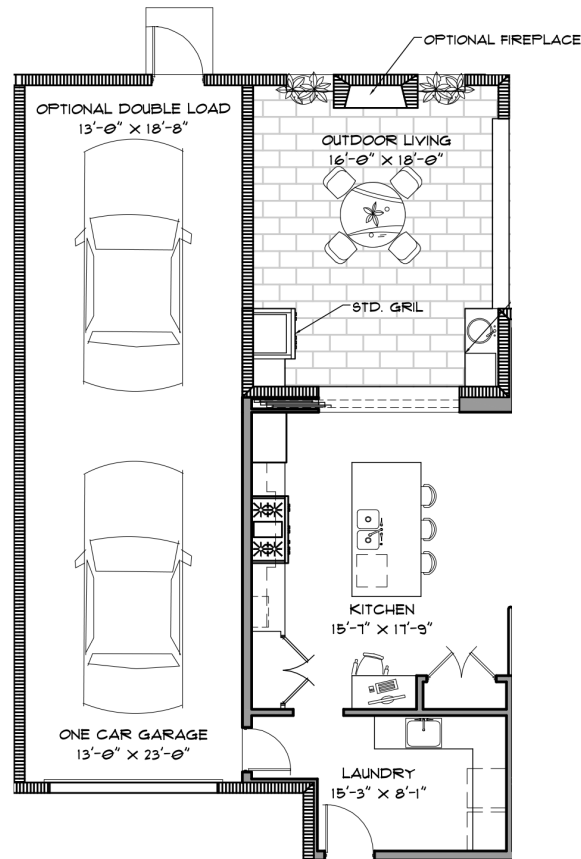
187 SQ. FT.

3-Car Garage Addition

263 SQ. FT.

Cabana Addition

245 SQ. FT.



9123 Strada Place, Suite 7125 Naples, FL 34108

239.594.9400

residencesatmercato.com

PROVENCE
Villas